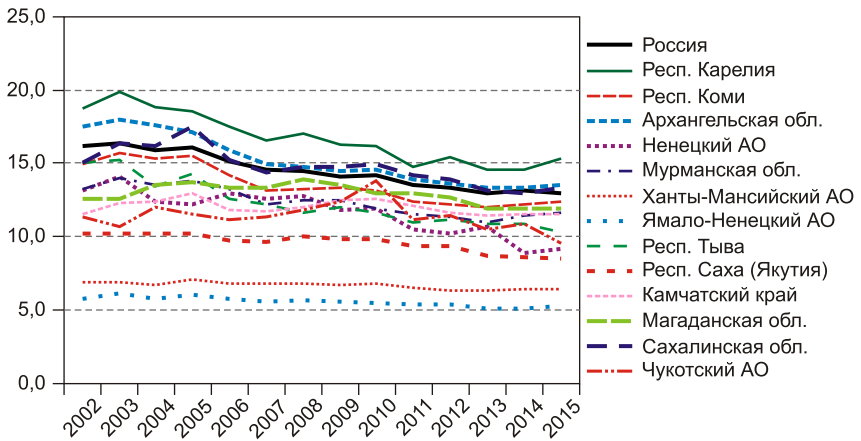


[2; 5; 8; 10].

2004 ..

(. 1).



. I.

2002–2015 .. 1000 .

:

, 2002 ., 2009–2010 . -
2001 . 2014 .

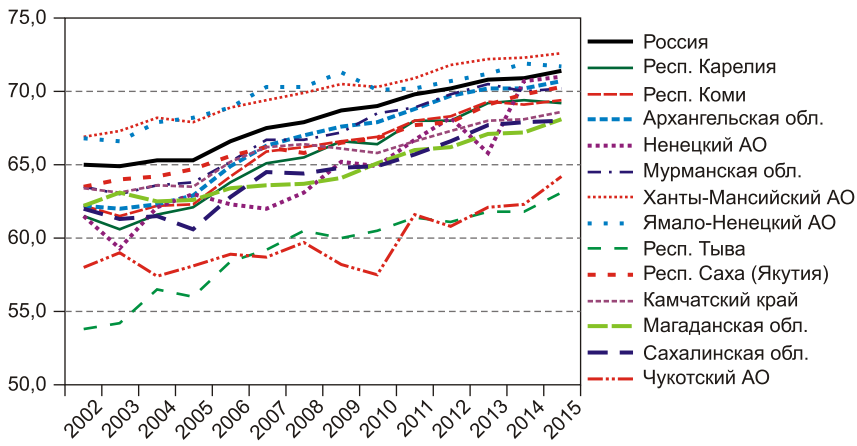
1,9% 2003 ., : 2014 .

. 2015 . -
-
-
50 . ., , -
1000 . , -
-
(5,6% 2003–2015 .)
(6,5%), -
(7,2%), , -

2003–2015 .

, , -
, . -
, -
, , -
, (-
, , -
, , -
, . -
2009 . , 2013 . -
-
-

. . . , . . .
 . . . [1] - . -
 1980- , - - . -
 , , -
 , . -
 , [9]. -
 2000- -
 , . , -
 « » , -
 1988–1989 . -
 , . -
 , - , -
 , -
 , 2000 . -
 , 2015 .– 8,3 10,2 , 1980- -
 [9]. -
 , - -
 (. 2). -



.2.

2002–2015 .,

(., , [3; 4; 7; 11; 15; 16]).

1,5

[4].

[11].

[3].

[7].

:

, 2017, 4 (96)

81

2003–2015 . , -
()

(.1). 2012 . -
2013 .

, , , , 2003 . -

I

2003–2015 .,

	2003	2004	2005	2007	2009	2011	2012	2013	2014	2015
	64,9	65,3	65,3	67,5	68,7	69,8	70,2	70,8	70,9	71,4

	59,0	57,5	58,1	58,7	58,2	61,6	60,8	62,1	62,3	64,2
.	63,1	62,4	62,6	63,6	64,1	66,0	66,2	67,1	67,2	68,1
	63,1	63,6	63,5	66,2	66,1	66,6	67,3	68,0	68,1	68,6
()	64,0	64,2	64,7	66,2	66,5	67,7	67,9	69,1	69,8	70,3

	54,2	56,5	56,0	59,2	60,0	61,4	61,1	61,8	61,8	63,1
.	61,3	61,5	60,6	64,5	64,8	65,7	66,6	67,7	67,9	68,0
	60,6	61,6	62,1	65,1	66,6	68,0	68,0	69,2	69,4	69,2
	61,5	62,2	62,3	65,8	66,5	68,0	68,3	69,3	69,1	69,4
.	63,0	63,6	63,8	66,7	67,2	68,9	69,8	70,5	70,0	70,2
.	61,9	62,3	62,9	66,3	67,6	68,8	69,7	70,2	70,2	70,7
	59,3	62,1	63,0	62,0	65,2	66,7	68,2	65,8	70,7	71,0

-	66,6	67,9	68,2	70,2	71,3	70,2	70,7	71,2	71,9	71,7
-	67,3	68,2	67,9	69,4	70,5	70,9	71,8	72,2	72,3	72,6

:

-

2003–2015 . -

-

2014–2015 . (28–32-) (.2) -

(

44 . .),

2013 .

(65,8) 80- 83 .

2

	2003	2008	2009	2012	2013	2014	2015
-	11	12	13	12	11	11	12
-	14	10	8	23	21	16	21
	86	80	74	63	80	28	32
.	64	41	78	40	39	38	37
()	46	60	64	65	59	48	52
.	51	48	53	34	32	44	53
	69	57	63	61	56	62	64
	78	63	61	64	57	59	66
	57	55	67	70	68	72	74
.	56	76	80	79	76	78	78
.	71	73	75	75	72	74	79
	85	83	83	83	82	82	84
	88	82	82	82	83	83	85

:

2008–2014 .– 83, 2015 .– 85

2003 . 89 ,

. -
 -
 , , , -
 . -
 -
 , , . -
 , -
 , , . -
 . -
 -
 71,3–71,9 . -
 25
 , 2008–2009 . -
 :
 11–13- .
 2013 .
 72 .
 « » -
 , : -
 : 10% 14%
 24,6% .
 , -
 , -
 . (10,9%) -
 (13,2%),
 (45,8 30,8% 25,9% -
), , , -
 , , -
 -

:

- : 2,5 2003 . 1,2 2015 ., -
1,7 0,3 . ,

2025 , -
75 , , -
, .

- , -
, -
- [12]. 2003 .
- 13 (.3).

, , - -
-
-
-
-
, Ó , -
« »

« » , ,
, , -
, ,
, . ,
, .

2003 . 14,5 16 , -
-
-
, .

9,7 12,6 , .

2003 2015 ..

	2003			2015			-	
	-	-	-	-	-	-	2003	2015
	64,9	58,6	71,8	71,4	65,9	76,7	13,3	10,8
	60,6	53,7	69,0	69,2	62,9	75,5	15,3	12,6
	61,5	55,5	68,7	69,4	63,3	75,7	13,2	12,4
	61,9	55,4	69,9	70,7	64,9	76,6	14,5	11,7
	59,3	52,0	68,1	71,0	65,2	76,9	16,0	11,7
	63,0	56,8	70,0	70,2	64,5	75,7	13,2	11,2
-	67,3	62,0	73,1	70,3	64,9	75,8	11,1	10,9
-	66,6	61,6	72,3	68,6	63,3	74,4	10,7	11,1
	54,2	48,8	60,2	63,1	58,1	68,3	11,4	10,2
()	64,0	58,1	70,6	70,3	64,9	75,8	12,5	10,9
	63,1	57,5	69,8	68,6	63,3	74,4	12,3	11,1
	63,1	57,4	70,0	68,1	63,2	73,4	12,6	10,2
	61,3	55,2	68,7	68,0	62,4	74,1	13,5	11,7
	59,0	54,8	64,5	64,2	59,4	69,7	9,7	10,3

: 2015 .

2000-

2003–2015 . 2015 .

2009 .

2003–2009 .

2 2,9 .

2003–2015 .

2003 ., 2

2010 .

2003 ., 2015 .

2006 .

«

»

:

4

, %

	2003			2015		
	-	-	-	-	-	-
	-	-	-	-	-	-
	56,6	12,3	14,2	48,9	15,8	9,3
	54,5	10,5	16,9	50,3	15,9	9,1
	48,0	10,5	20,8	46,4	16,6	13,0
	55,6	10,5	17,3	56,6	16,9	11,2
	51,6	10,2	25,3	48,1	17,7	19,2
	54,4	11,3	14,8	55,1	16,2	10,8
-	41,3	14,8	24,8	39,7	17,0	13,0
-	36,5	12,3	30,0	37,6	18,3	20,3
	33,0	7,6	33,4	33,7	11,9	27,9
()	40,6	12,9	23,4	45,5	15,3	17,1
	47,4	12,6	19,2	53,0	15,9	11,2
	44,9	14,3	20,2	45,7	17,3	14,7
	51,4	12,3	21,3	47,3	17,3	13,9
	35,0	12,0	33,1	50,2	12,1	17,1

,

2003–2015 .

, %

		-	
	-31,5	1,3	-48,1
	-29,0	16,1	-58,6
	-23,6	25,1	-50,6
	-23,7	20,8	-51,3
	-39,2	13,3	-50,5
	-16,0	19,0	-39,8
-	-10,8	6,8	-51,5
-	-10,5	29,6	-41,2
	-30,8	6,7	-43,5
()	-6,7	-1,2	-39,1
	4,4	17,7	-45,5
	-3,9	14,4	-31,5
	-25,3	13,9	-47,0
	27,2	-10,1	-54,0

-

-

-

-

-

. 2,

,

， ()，

- . -

，

， . -

[6]. -

1990- -

. ， 2005 . -

. 2010 . -

. 2011 . -

， -

. 2012 . -

， -

. 2013 . -

， -

2014 . .

-

. 2015 . -

， -

， -

. 2003–2015 . -

， 2006 . -

.

:

.	2012 .	-
		-
		-
		-
1993-2011 .	500 999 ,	-
	1000	-
	168	-
,		2013 .
		-
		-
:	700-720 .	-
		-
	1995-2015 .	-
		-
(.6).		-
,		,
1990-		-
		-
		-
		-
		-
		-
	(-
),	-
		-
-	,	-
	,	-
		:
		-

, 1000

	1995	2000	2005	2010	2015	1995–2015,
	18,1	15,3	11,0	7,5	6,5	2,8
	25,3	13,0	8,7	5,0	4,6	5,5
-	22,5	10,2	7,3	4,3	5,0	4,5
.	14,2	15,1	12,0	9,3	5,1	2,8
	18,0	24,4	16,6	5,7	5,3	3,4
	17,4	14,4	9,6	4,9	5,7	3,1
.	15,9	12,5	11,2	5,3	5,9	2,7
.	16,2	14,1	12,6	6,8	6,0	2,7
.	22,7	15,1	14,4	5,9	6,1	3,7
-	21,5	14,4	11,2	12,2	7,3	2,9
()	19,5	17,6	10,6	7,2	7,6	2,6
	15,4	16,0	10,3	9,4	9,1	1,7
	28,0	30,0	19,3	13,0	14,5	1,9
	34,0	23,4	17,6	21,8	16,0	2,1

ó

()

-

»

,

.

.

,

,

-

.

.

-

.

,

,

,

-

.

-

-

,

.

,

-

-

.

,

.

,

-

,

.

-

-

-

-

-

-

-

,

,

-

.C

.

-

-

-

-

-

-

, - -
 , - -
 , - -
 [13; 14].

2004–2015 . -
 - , -
 , -

(15-14-7-6)

1. . . : -
 // / . . . -
2. . . , 1979. - . 7–30. -
2012. - 2 (74). - . 86–103. // : . -
3. . . - . , 2002. -
4. . . , . . . : -
5. - . - // : -
 , 2008. - . 118–129. -
6. // () .
 . - 2012. - 5. - . 62–67. -
 . . . -
 // -

7. . – . VII . II. – . 253–259.
8. // . – 2005. – . 45, 3. – . 84–85.
9. // : . – 2010. – 2. – . 223–241.
10. / – . 1995.
11. . – 2009. – 8. – . 50–55.
12. // . – 2005. – . 151–177.
1. – . 78–92.
13. *Cakmak S., Hebbert C., Vanos J. et al.* Ozone exposure and cardiovascular-related mortality in the Canadian Census Health and Environment Cohort (CANCHEC) by spatial synoptic classification zone // *Environmental Pollution*. – 2016. – Vol. 214, July. – P. 589–599.
14. *Donaldson S.G., Van Oostdam J., Tikhonov C. et al.* Environmental contaminants and human health in the Canadian Arctic // *Science of the Total Environment*. – 2010. – Vol. 408, iss. 22. – P. 5165–5234.
15. *Markov A., Solonin I., Bojko E.* Heart rate variability in workers of various professions in contrasting seasons of the year // *International Journal of Occupational Medicine and Environmental Health*. – 2016. – No. 29 (5). – P. 793–800.
16. *Parshukova O., Potolitsyna N., Shadrina V. et al.* Features of selenium metabolism in humans living under the conditions of North European Russia // *International Archives of Occupational and Environmental Health*. – 2014. – No. 87. – P. 607–614.

(,) – -
 , - -
 (167982, , , 26, e-mail:
 popova@iespn.komisc.ru).

(167982, , 26, e-mail: taranenko@iespn.komisc.ru).

DOI: 10.15372/REG20170404

Region: Economics & Sociology, 2017, No. 4 (96), p. 77–100

L.A. Popova, N.N. Taranenko

**NORTHERN REGIONS IN RUSSIA:
THE LEVEL AND STRUCTURE OF MORTALITY**

The article examines mortality and life expectancy in the northern regions of Russia. It shows that life expectancy in the North is below the national average. Only in Khanty-Mansi and Yamalo-Nenets Autonomous Okrugs, this indicator is higher than the nationwide figure. This situation is largely due to the «export of mortality» to the southern regions. Despite the reduction, life expectancy here is still more gender-differentiated than it is in other parts of the country. The proportion of mortality from external causes remains above the average Russian level. In most of the North, infant mortality has declined over recent years. The article's conclusion is that the Russian North still has large reserves to increase life expectancy. We justify activities for extending the existing positive trends.

Keywords: northern regions; mortality; life expectancy; gender differentiation; mortality causes; infant mortality

The publication is prepared within the framework of the Complex Research Program of the Ural Branch of the Russian Academy of Sciences (project No. 15-14-7-6)

References

1. *Andreev, E.M. & A.G. Vishnevsky* (Eds.). (1979). *Prodolzhitel'nost zhizni v SSSR: differentsialnyy analiz* [Life expectancy in the USSR: analysis of differentials]. Pro-

dolzhitel'nost zhizni: analiz i modelirovanie [Life Expectancy: Analysis and Modeling]. Moscow, 7–30.

2. *Grigoryev, Yu.A. & S.V. Soboleva.* (2012). Ekzogennaya i endogennaya determinatsiya smertnosti v Sibirskom federalnom okruge [Exogenous and endogenous determination of mortality in the Siberian Federal District]. Region: ekonomika i sotsiologiya [Region: Economics and Sociology], 2 (74), 86–103.

3. *Nechaeva, E.V.* (2002). Aktualnye problemy reformirovaniya zdravookhraneniya Respubliki Komi [Pressing Problems of Healthcare Reformation in the Republic of Komi]. Moscow.

4. *Nuzhnaya, T.G., V.P. Nuzhnyy & D.N. Shmakov.* (2008). Zdorovye cheloveka na Severe. Patogenez arterialnoy gipertonii u pozhilykh lyudey vsledstvie narusheniya distolicheskoy funktsii levogo zheludochka serdtsa [Human health in the North. The pathogenesis of arterial hypertension in the elderly due to left ventricular diastolic dysfunction]. Sever: arkticheskii vektor sotsialno-ekologicheskikh issledovaniy [The North: Arctic Vector of Socio-Environmental Research]. Syktyvkar, 118–129.

5. *Preminya, Ya.K.* (2012). Sovremennye cherty smertnosti naseleniya Evropeyskogo Severa Rossii [Modern features of population mortality in the European North of Russia]. Vestnik Severnogo (Arkticheskogo) federalnogo universiteta. Seriya: gumanitarnye i sotsialnye nauki [Vestnik of Northern (Arctic) Federal University. Series: Humanitarian and Social Sciences], 5, 62–67.

6. *Ryazantsev, S.V., M.N. Khranova & A.S. Grishin.* (2016). Vozmozhnosti sokrashcheniya smertnosti naseleniya ot vneshnikh prichin kak rezerv demograficheskogo razvitiya Rossii [The possibility of reducing mortality from external causes as a reserve demographic development of Russia]. Dinamika i inertsiyennost vosproizvodstva naseleniya i zameshcheniya pokoleniy v Rossii i SNG: Sb. st. VII Uralskogo demograficheskogo foruma s mezhdunar. uchastiem. T. II [Dynamics and Inertia of the Reproduction and Replacement of Generations in Russia and the CIS: Collection of articles from the VII Ural Demographic Forum with International Participants. Vol. II]. Yekaterinburg, 253–259.

7. *Skavronskaya, T.V., A.I. Leus, L.A. Fedoseeva et al.* (2005). Rasprostranennost arterialnoy gipertonii sredi rabotnikov predpriyatiy gazovoy promyshlennosti v rayone Kraynego severa [The prevalence of arterial hypertension among gas industry workers in the Far North]. Kardiologiya [Cardiology], Vol. 45, No. 3, 84–85.

8. *Soboleva, S.V., N.E. Smirnova & O.V. Chudaeva.* (2010). Zdorovye naseleniya Sibiri: riski i ikh izmeriteli [Health risks and how to measure them]. Region: ekonomika i sotsiologiya [Region: Economics and Sociology], 2, 223–241.

9. *Kvasha, A.Ya. & V.A. Iontsev* (Eds.). (1995). Sovremennaya demografiya [Modern Demography]. Moscow.

10. *Sukneva, S.A.* (2009). Smertnost naseleniya v Respublike Sakha (Yakutiya) [Mortality in the Republic of Sakha (Yakutia)]. Voprosy statistiki [Issues of Statistics], 8, 50–55.

11. *Tkachev, A.V., L.K. Dobrodeeva & F.A. Bichkaeva.* (2005). Osobennosti zdorovya cheloveka na Severe [Peculiarities of human health in the North]. Sever kak obyekt kompleksnykh regionalnykh issledovaniy [North as an Object of Comprehensive Regional Research]. Syktyvkar, 151–177.

12. *Kharchenko, V.I., A.S. Akopyan, R.Yu. Mikhaylova et al.* (2002). Uroven smertnosti v Rossii v sravnenii s razvitymi stranami [Mortality rate in Russia: a comparison with industrialized states]. Problemy prognozirovaniya [Studies on Russian Economic Development], 1, 78–92.

13. *Cakmak, S., C. Hebborn, J. Vanos et al.* (2016). Ozone exposure and cardiovascular-related mortality in the Canadian Census Health and Environment Cohort (CANCHEC) by spatial synoptic classification zone. Environmental Pollution, Vol. 214, July, 589–599.

14. *Donaldson, S.G., J. Van Oostdam, C. Tikhonov et al.* (2010). Environmental contaminants and human health in the Canadian Arctic. Science of The Total Environment, Vol. 408, Iss. 22, 5165–5234.

15. *Markov, A., I. Solonin & E. Bojko.* (2016). Heart rate variability in workers of various professions in contrasting seasons of the year. International Journal of Occupational Medicine and Environmental Health , 29 (5), 793–800.

16. *Parshukova, O., N. Potolitsyna, V. Shadrina et al.* (2014). Features of selenium metabolism in humans living under the conditions of North European Russia. International Archives of Occupational and Environmental Health, 87, 607–614.

Information about the authors

Popova, Larisa Alekseevna (Syktyvkar, Russia) – Doctor of Sciences (Economics), Deputy Director at the Institute for Socio-Economic and Energy Problems of the North, Komi Science Centre, Ural Branch of the Russian Academy of Sciences, (26, Kommunisticheskaya st., Syktyvkar, 167982, Russia, e-mail: popova@iespn.komisc.ru).

Taranenko, Natalya Nikolaevna (Syktyvkar, Russia) – Junior Researcher at the Institute for Socio-Economic and Energy Problems of the North, Komi Science Centre, Ural Branch of the Russian Academy of Sciences, (26, Kommunisticheskaya st., Syktyvkar, 167982, Russia, e-mail: taranenko@iespn.komisc.ru).

31.07.2017 .

© 2017